



# MODEL 700TWG

## PRAIRIE DOG BORING MACHINE

### OWNERS MANUAL & PARTS LIST



## PRAIRIE DOG BORING EQUIPMENT, INC.

10006 AIRLINE DRIVE HOUSTON, TEXAS 77037 281-448-8442 FAX: 281-448-5553

Toll Free 866-631-3786

# Prairie Dog Boring Equipment, Inc.

## Limited Warranty

To the original purchaser for 1 year from purchase date we will repair or replace at our option and free of charge any parts found to be defective under normal use and service resulting from defects in material and/or workmanship after an examination at our factory in Houston, Texas.

All transportation charges, damages, and loss incurred in connection with the transportation of all parts for inspection, replacement, or repair under this warranty shall be borne by the purchaser.

The express warranty contained herein shall not be applied to any boring machine attachment or part which has been altered in any way, nor shall such express warranty apply to any damages resulting from accident, misuse, or abuse, nor shall such express warranty apply to any damages resulting from failure to follow the Prairie Dog Boring Equipment, Inc. instruction for operation and maintenance of boring machine attachments and parts. Also, the express warranty contained herein shall not apply to engines, clutches, gearboxes, etc., which are not of our manufacture as they are covered by the design and specification changes on future machines without notice and without obligation on our part to present owners.

The foregoing express warranty is in lieu of all other express warranties. Prairie Dog Boring Equipment, Inc. neither assumes nor authorizes any other person, natural or corporate, to assume for it any other obligation or liability in connection with or with respect to any boring machine attachments or parts.

Prairie Dog Boring Equipment, Inc. hereby disclaims any and all implied warranties, including, but not limited to warranties of merchantability and fitness for any particular purpose, if and to the extent, but only if and to the extent, that such disclaimer is not forbidden by any applicable law and any implied warranties, including, but not limited to which Prairie Dog Boring Equipment, Inc. is so forbidden to disclaim by any applicable law, are limited to the periods of the express warranty as defined in the first paragraph of this warranty. Prairie Dog Boring Equipment, Inc. shall in no event be liable for any consequential, incidental or special damages, and/or expenses.

## PRAIRIE DOG BORING MACHINE

NO REGISTRATION (WARRANTY) CARD IS NECESSARY TO OBTAIN WARRANTY ON PRAIRIE DOG BORING MACHINE. FILL IN THE REQUIRED INFORMATION AND REQUIRED INFORMATION AND RETAIN FOR YOUR RECORDS.

Prairie Dog Boring Machine: Serial No. \_\_\_\_\_ Model No. \_\_\_\_\_  
Dealer Purchased from: \_\_\_\_\_ Date: \_\_\_\_\_

If warranty service is needed, contact your nearest authorized dealer or Prairie Dog Boring Equipment, Inc. For prompt attention our service department will need to know the trouble experienced and the total number of hours the boring machine has been operated. If you differ with the decision of our service department on warranty claim, ask your service department to submit all supporting facts for our review. If Prairie Dog Boring Equipment, Inc. decides that your claim is justified, you will be fully reimbursed for those items accepted as defective.

To avoid misunderstandings which might occur between boring machine owners and Prairie Dog Boring Equipment, Inc., we are listing causes of boring machine failures, where repair or replacement is NOT covered by Prairie Dog Boring Equipment, Inc. warranty.

### ABUSE OR NEGLECT

1. Parts which are scored or broken because the machine was operated without sufficient lubricating oil or the power grade of oil are not covered by warranty. Check oil level at least every five hours, and refill when necessary. Change oil as recommended.
2. Damage or wear caused by dirt which enters the machine because of improper maintenance is not covered by warranty. Clean and re-oil regularly.
3. Warranty does not cover the adjustment of the machine unless the need for such repair is the result of defects in material or workmanship or both. Minor adjustment are NOT covered by warranty.

#### PRAIRIE DOG BORING MACHINE (Continued)

4. Broken parts which result from improper operation, over speeding, lugging or abuse in operation are not covered by warranty.
5. Repair or adjustment of associated parts which are not of Prairie Dog Boring Equipment, Inc. manufacture will not be covered by Prairie Dog Boring Equipment, Inc. warranty.
6. Only ORIGINAL PRAIRIE DOG BORING EQUIPMENT, INC. PART OR PARTS APPROVED PRAIRIE DOG BORING EQUIPMENT, INC. may be covered by warranty.
7. About improvements: Prairie Dog Boring Equipment, Inc. is continually striving to improve its products, therefore, we reserve the right to make improvements or changes when it becomes practical to do so, without incurring any obligations to make changes or additions to the equipment sold previously.

WARRANTY IS AVAILABLE ONLY THROUGH SERVICE CENTERS OR SERVICE DEPARTMENT WHICH HAVE BEEN APPROVED AND AUTHORIZED BY PRAIRIE DOG BORING EQUIPMENT, INC.

**BORING MACHINES CAN BE DANGEROUS IF OPERATED  
IMPROPERLY SO FOLLOW THESE  
SAFETY INSTRUCTIONS**

- 1. Only the OPERATOR should be allowed near the machine.**
- 2. NEVER STAND or allow anyone else to stand near the boring machine when rotating.**
- 3. KEEP ALL GUARDS and shields in place while machine is running.**
- 4. SHUT OFF ENGINE before leaving machine.**
- 5. ALWAYS STOP engine before servicing machine.**
- 6. REMOVE KEY or spark plug wire when leaving machine unattended**
- 7. ALLOW ENGINE TO COOL before refueling**
- 8. WEAR TIGHT FITTING CLOTHES when using boring machines and keep your hands, feet, and clothing away from moving parts.**
- 9. KNOW what is down there before you bore. If necessary, get clearance from the phone company, power company, community water and sewer departments.**
- 10. MOVE SLOWLY when starting to bore.**
- 11. USE THE BUDDY SYSTEM Do not work alone in isolated areas**
- 12. ALWAYS be aware that internal combustion engines produce noxious fumes. Allow for proper ventilation of the work space.**

**\* SPECIAL CAUTION \***

**ALWAYS, ALWAYS, ALWAYS stay at the controls of the machine. You may have to stop suddenly to avoid danger.**

**PLEASE observe all instructions. They are considered common sense by professional boring contractors. There is just no substitute for a careful, safety minded operators SERIOUS INJURY OR DEATH COULD RESULT FROM FAILURE TO FOLLOW THESE SUGGESTIONS.**

**PLEASE READ AND UNDERSTAND ANY ACCOMPANYING ENGINE OR TRANSMISSION OWNER'S MANUALS THAT COME WITH YOUR "PRAIRIE DOG" BORING MACHINE. THEY CONTAIN IMPORTANT SAFETY, OPERATION AND MAINTENANCE INFORMATION. IF YOU ARE UNSURE WHETHER YOU HAVE ALL OF THE CORRECT MANUALS PLEASE CALL OR EMAIL. BE SURE TO HAVE YOUR MODEL NUMBER HANDY.**  
**PRAIRIE DOG SUGGESTED OPERATIONS & PROCEDURES**

## **FOR MODEL'S PDP500TW, PDP900TW, PDP1200TW, AND PDP1800TW**

SOIL CONDITIONS CAN VARY TREMENDOUSLY AND MAY AFFECT LOCAL PROCEDURES. THESE PROCEDURES ARE GIVEN AS GUIDELINES. MANY USERS FIND IT EASIER TO USE OTHER METHODS OF THEIR OWN MAKING.

### **THE HOLE**

FIRST, YOU NEED A BORE PIT TO SET THE MACHINE AT THE DESIRED DEPTH OF DRILL ROD ENTRY. THE DIMENSIONS OF THE PIT NEED TO BE A MINIMUM OF 20" WIDE AND 6' LONG. WHERE THE PILOT LEAVES THE BORE HOLE (COMMONLY CALLED A COME-OUT HOLE) YOU WILL NEED A SECOND BORE PIT. THE DIMENSIONS NEED TO BE A MINIMUM OF 20" WIDE AND A LENGTH AND DEPTH SUFFICIENT FOR THE INSTALLATION OF YOUR PIPE, WIRE OR OTHER UNDERGROUND UTILITY EQUIPMENT. (Figure 1)

### **THE LINE UP**

SET THE MACHINE IN THE BORE PIT ON LEVEL TO ENSURE STRAIGHT BORES. AFTER INSTALLING YOUR FIRST DRILL STEM TO THE "PRAIRIE DOG" HORIZONTAL BORING MACHINE, USE A LEVEL ON TOP OF THE DRILL STEM TO FURTHER ENSURE THE BORE WILL BE ON GRADE. TWO STAKES IN EACH BORE PIT ATTACHED TOGETHER WITH STRING CAN ALSO PROVIDE A STRAIGHT LINE REFERENCE FOR BORES. NEXT TAKE AN ACCURATE MEASUREMENT OF THE LENGTH OF BORE OR LAY YOUR PIPE OUT FROM BORE PIT TO HELP GUAGE YOUR DISTANCE. WHEN THE LAST SECTION OF PIPE IS ADDED FOR DRILLING, YOU SHOULD BE ABLE TO SEE IT IN THE COME-OUT HOLE. (Figure 2)

### **WATER**

THE EASIEST APPLICATION IS OF COURSE FROM AN EXISTING WATER SOURCE USING A COMMON GARDEN HOSE. IF A WATER SUPPLY IS NOT AVAILABLE, TANKS AND DRUMS, WITH THE ADDITION OF A WATER PUMP THAT CAN MAINTAIN A WATER PRESSURE OF 40 TO 50 PSI IS ALL THAT IS NECESSARY. THE AMOUNT OF WATER NEEDED FOR YOUR SPECIFIC SOIL CONDITIONS CAN VARY, BUT IN NORMAL CONDITIONS A 55 GALLON DRUM OF WATER IS SUFFICIENT TO BORE 2" HOLE 30 FEET.

### **DRILLING**

INSTALL THE PILOT BIT TO YOUR FIRST DRILL STEM, START THE MOTOR, ENGAGE THE CENTRIFUGAL CLUTCH BY INCREASING THE ENGINE THROTTLE AND TURN THE WATER ON TO ENSURE THE PILOT BIT IS FREE OF ANY OBSTRUCTIONS. THE MACHINE ADVANCES WHEN THE HANDLE IS ROTATED. ENOUGH PRESSURE SHOULD BE APPLIED TO THE HANDLE ADVANCING SYSTEM TO ALLOW SMOOTH EASY OPERATION. IF TOO MUCH PRESSURE IS APPLIED, THE WATER WILL NOT BE ABLE TO MOVE THROUGH THE DRILL BIT EASILY AND CAUSE THE PILOT BIT TO BECOME CLOGGED. IF THIS HAPPENS STOP THE ADVANCING SYSTEM AND THE WATER SHOULD UNCLOG THE BIT MOMENTARILY. (Figure 3, Figure 4)

BEFORE SEPARATING THE RODS DISENGAGE THE ENGINE'S CENTRIFUGAL BY REDUCING THE ENGINE THROTTLE TO AN IDLE. PIPE WRENCHES MAY BE USED TO LOOSEN THE DRILL RODS FROM EACH OTHER OR FROM THE DRILL ROD ADAPTOR ON THE MACHINE. ONCE LOOSE THEY SHOULD UNTHREAD EASILY AND COMPLETELY DISENGAGE IN 1½ TURNS. ALWAYS TURN THE RODS THAT ARE EXPOSED IN THE BORE PIT NOT THE ONES IN THE BORE HOLE. TURNING RODS IN THE HOLE COULD CAUSE A BIT, BACK REAMER OR OTHER RODS TO UNTHREAD AND BE LOST.

**\*IF WATER AND CUTTINGS ARE NOT COMING BACK OUT OF THE HOLE STOP AND INVESTIGATE THE REASON IMMEDIATELY. IT MAY ONLY TAKE SIMPLY BACKING OFF AND LETTING THE ROD TURN WHILE PUMPING WATER TO CLEAR THE PILOT HOLE OR IT MAY REQUIRE REMOVING THE DRILL RODS FROM THE HOLE COMPLETELY TO CHECK THE WATER JETS IN THE PILOT BIT. AT ANY RATE, CONTINUING TO PUSH ON WILL ONLY ALLOW THE CUTTINGS TO COLLECT AND BIND UP AROUND THE DRILL ROD AND LUG THE ENGINE. THE PROBLEM WILL GET WORSE IF IT IS NOT CORRECTED. EVEN AT OVER 100' THE DRILL ROD SHOULD TURN EASILY WITHOUT LUGGING THE ENGINE DOWN.\***

## BACK REAMING

ONCE YOU'VE REACHED YOUR COME OUT HOLE YOU MAY NEED TO ENLARGE IT TO ACCOMMODATE PIPE OR CONDUIT. REMOVE THE PILOT BIT AND INSTALL A BACK REAMER AND CABLE SWIVEL.(Figure 5) THE CABLE SWIVEL IS NECESSARY FOR PULLING BACK A CABLE FOR LATER USE IF YOU INTEND TO PULL THE WIRE, PIPE OR CONDUIT BACK THROUGH THE HOLE OR IF YOU NEED TO PULL BACK A PLUG TO SWAB THE HOLE BEFORE INSTALLATION OF THE UNDERGROUND UTILITY. IF YOU INTEND TO PUSH IT YOU STILL NEED THE CABLE SWIVEL ON THE END OF THE BACK REAMER TO CONTROL THE WATER FLOW.

BACKREAM A HOLE ROUGHLY 2" BIGGER THAN YOUR PIPE, OR OTHER UNDERGROUND UTILITY MATERIAL, WHICH WILL ALLOW FOR EASE OF INSTALLATION.(Figure 6) WHEN DRILLING BE SURE NOT TO FORCE THE MACHINE. THE ROTATING HANDLE SHOULD PROVIDE ALL THE POWER YOU NEED WITHOUT USING EXCESSIVE FORCE. A SIMPLE RULE TO USE IS THAT IF THE MACHINE IS TIRING THE OPERATOR HE NEEDS TO BACK OFF. THE BITS ARE DESIGNED TO CUT THE SOIL EASILY WITH CARBIDE INSERTS.

IT IS BEST TO BORE WITH SLOW STEADY FORCE. LISTENING TO THE ENGINE IS A GOOD INDICATOR OF PROPER FORCE. A COMMON NEW OPERATOR ERROR IS TO LET THE MACHINE REV UP AND THEN FORCE THE BIT INTO THE SOIL TOO HARD UNTIL THE ENGINE CAN'T TURN AT FULL SPEED THEN LIGHTENING THE PRESSURE TO LET THE ENGINE REV UP AGAIN. THIS LUGS THE ENGINE, SLOWS THE BACKREAMER AND PUTS UNNEEDED STRESS ON THE ADVANCE MECHANISM. STEADY PRESSURE WITH SOME GOVERNOR "KICKING IN" WILL ALWAYS WORK BETTER THAN FORCING AND RELEASING. WITH THE ADDITION OF WATER, THE SOIL NEEDS TO BE SIMILAR TO THE CONSISTANCY OF A THICK MALT. THIS IS DESIRABLE FOR TWO REASONS; THE MIXTURE KEEPS THE HOLE OPEN SO IT WILL NOT CAVE IN, AND ALLOWS THE PIPE, WIRE, OR PLUG TO BE PULLED BACK EASILY. ALWAYS TURN THE RODS THAT ARE EXPOSED IN THE BORE PIT NOT THE ONES IN THE BORE HOLE. TURNING RODS IN THE HOLE COULD CAUSE A BIT, BACK REAMER OR OTHER RODS TO UNTHREAD AND BE LOST. ATTACHING A CABLE TO THE CABLE SWIVEL WILL AT LEAST ENSURE YOU CAN RETRIEVE LOST BACK REAMERS OR RODS.

## A WORD OF CAUTION

WHEN BORING, START EARLY AND TRY TO COMPLETE YOUR BORE THE SAME DAY. NEVER LEAVE A DRILL ROD IN THE HOLE FOR MORE THAN A COUPLE OF HOURS WHEN YOU STOP DRILLING. YOU CAN SEIZE THE DRILL STEM IF YOU ATTEMPT THIS BECAUSE THE WATER LEECHES OUT OF THE SOIL AND MAKES IT BECOME STICKY OR HARD AGAIN. IF IT BECOMES NECESSARY TO LEAVE THE HOLE OVERNIGHT, DRILL THE PILOT HOLE FIRST AND THEN REMOVE THE DRILL ROD FROM THE HOLE. YOU MAY THEN RE-DRILL THE PILOT HOLE IN JUST A FEW MINUTES.

## INSTALLING THE PIPE

WHEN BORING SMALL HOLES OF 1' AND 2" DIAMETER, IT IS NOT NECESSARY TO USE A PULL PLUG OR SWAB. THE PLUG IS PULLED BACK THROUGH THE HOLE WITH A CABLE ON EITHER SIDE, TO FORCE THE SLUDGE OUT OF THE HOLE. YOU CAN THEN ATTACH CABLE TO THE PIPE AND PULL IT THROUGH THE BORE PIT. THE JOB IS NOW COMPLETE.(Figure 8)

## OPERATION IN EXTREMELY SANDY SOILS

WHEN BORING EXTREMELY SANDY SOILS THERE IS A POSSIBILITY OF THE SOIL BEING UNSTABLE AND CAVING IN. BENTONITE CLAY WILL HELP TO STABILIZE THE SOIL AND PREVENT THE HOLE FROM COLLAPSING BY LINING THE HOLE WITH THE CLAY MIXTURE MADE UP OF THIN PLATELETS THAT STICK TOGETHER. BENTONITE CLAY CAN BE MIXED IN A DRUM OR OTHER SUITABLE CONTAINER OF WATER. IT WILL RESEMBLE HEAVY CREAM AND CAN BE PUMPED INTO THE HOLE WITH ANY CENTRIFICAL PEUMP AT 40 TO 50 POUNDS OF PRESSURE.

## DIFFICULT CLAY, GUMBO OR OTHER STICKY SOILS

WHEN DRILLING IN THESE SOILS THE CLAY MAY BE SO STICKY THAT IT DOES NOT WANT TO BREAK UP WITH PLAIN WATER TO FORM THAT PANCAKE BATTER CONSISTENCY WHICH ALLOWS IT TO RUN OUT OF THE HOLE. THIS CAN BE ESPECIALLY TROUBLESOME WHEN DRILLING THE PILOT HOLE AS THE CLAY MAY BEGIN TO SWELL AND BIND UP ON THE DRILL RODS. THE ADDITION OF DETERGENT (MAKE SURE IT IS BIO-DEGRADABLE) CAN HELP BREAK THE CLAY PARTICLES UP SO THEY MIX AND RUN MORE FREELY. ADDING DETERGENT CAN BE AS EASY AS A SMALL SQUIRT INTO EACH ROD AS THEY ARE ADDED IN THE PILOT DRILLING PROCESS OR IT CAN BE MIXED IN A DRUM OR OTHER SUITABLE CONTAINER OF WATER AND PUMPED THROUGH THE SYSTEM. ADDITIONALLY THERE ARE COMMERCIAL PRODUCTS ON THE MARKET THAT WILL PREVENT THE CLAY FROM ABSORBING WATER AND STICKING TOGETHER. THIS PRODUCT IS CALLED A "CLAY INHIBITOR". USED ACCORDING TO DIRECTIONS AND MIXED IN A SUITABLE CONTAINER CLAY INHIBITORS ARE AN EXCELLENT AND COST EFFECTIVE SOLUTION TO TOUGH CLAY CONDITIONS.

## DRILLING ROCK

MOST ROCK, SUCH AS SANDSTONE, CALICHE, SOFT LIMESTONE AND CONCRETE ARE FAIRLY EASY TO BORE THROUGH USING CARBIDE BITS. OTHER ROCK SUCH AS FLINT AND GRANITE WOULD REQUIRE A BORING RIG THAT UTILIZES A LARGE CRANE FOR SET-UP. IF YOU HAVE DIFFICULTY ON A BORE, AND THERE SEEMS TO BE AN IMPOSSIBLE OBSTRUCTION, THE BEST OPTION IS TO ATTEMPT TO BORE ANOTHER ROUTE IF POSSIBLE. RE-ROUTING IS NOT COMMON BUT NOT UNHEARD OF. IT IS PART OF THE BUSINESS OF BORING.

## A FINAL NOTE

WE, AT PRAIRIE DOG BORING EQUIPMENT, INC. ARE SURE YOU WILL GET MANY YEARS OF SERVICE AND PROFITABILITY WITH THE PURCHASE OF ONE OF OUR MACHINES. OUR "PRAIRIE DOG" HORIZONTAL BORING MACHINES WILL PUT A HOLE IN THE GROUND, AND NOT IN YOUR POCKET. FAMILY OWNED AND OPERATED FOR OVER 40 YEARS, WE TAKE PRIDE IN THE SERVICE AND CRAFTMANSHIP THAT GO INTO EVERY "PRAIRIE DOG" WE BUILD.



# How it works- Simple 7 step procedure

## **Step 1:**

Dig trenches on either side of the road up to desired depth, one trench to accommodate the machine and the other for come-out hole.

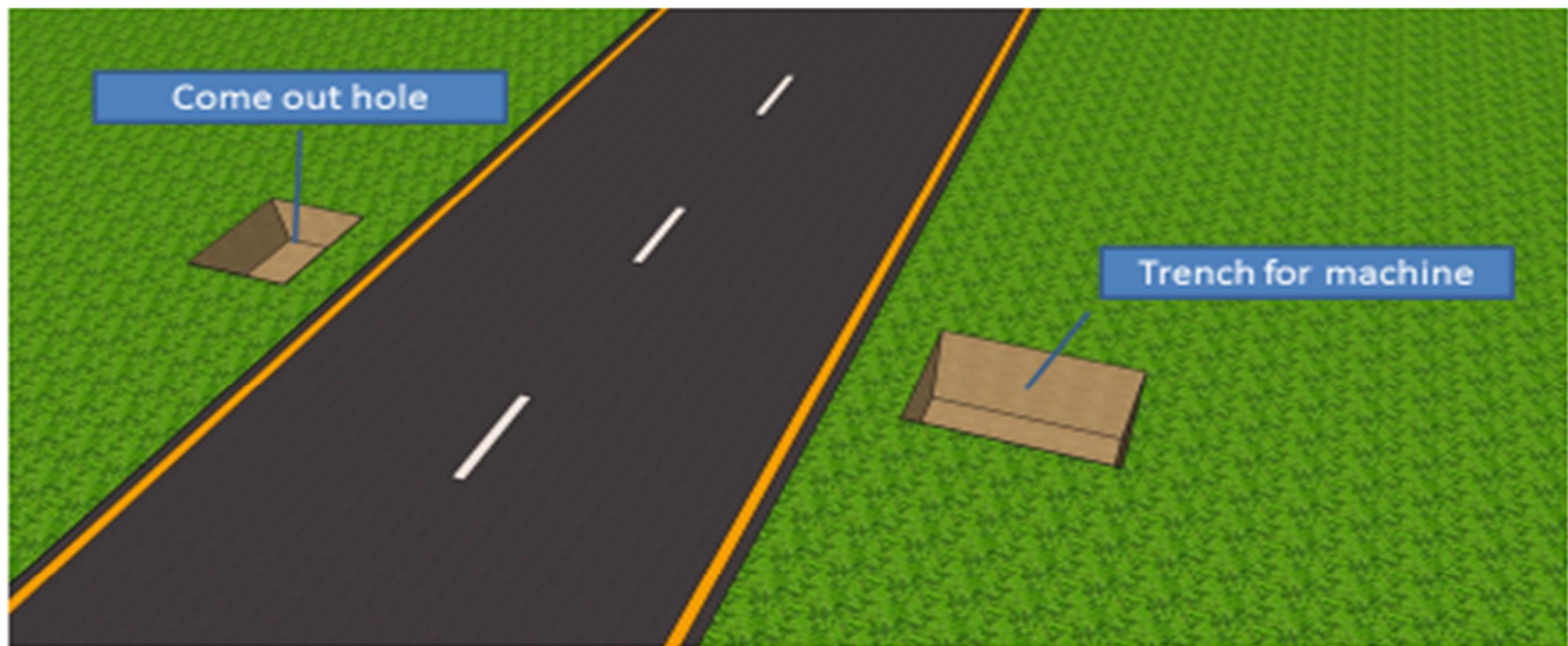


Figure 1

## Step 2:

Lower the machine into the trench and attach the first **Drill Rod** and **Pilot Bit** at the end. Attach the water hose and start engine. Start moving the machine forward.

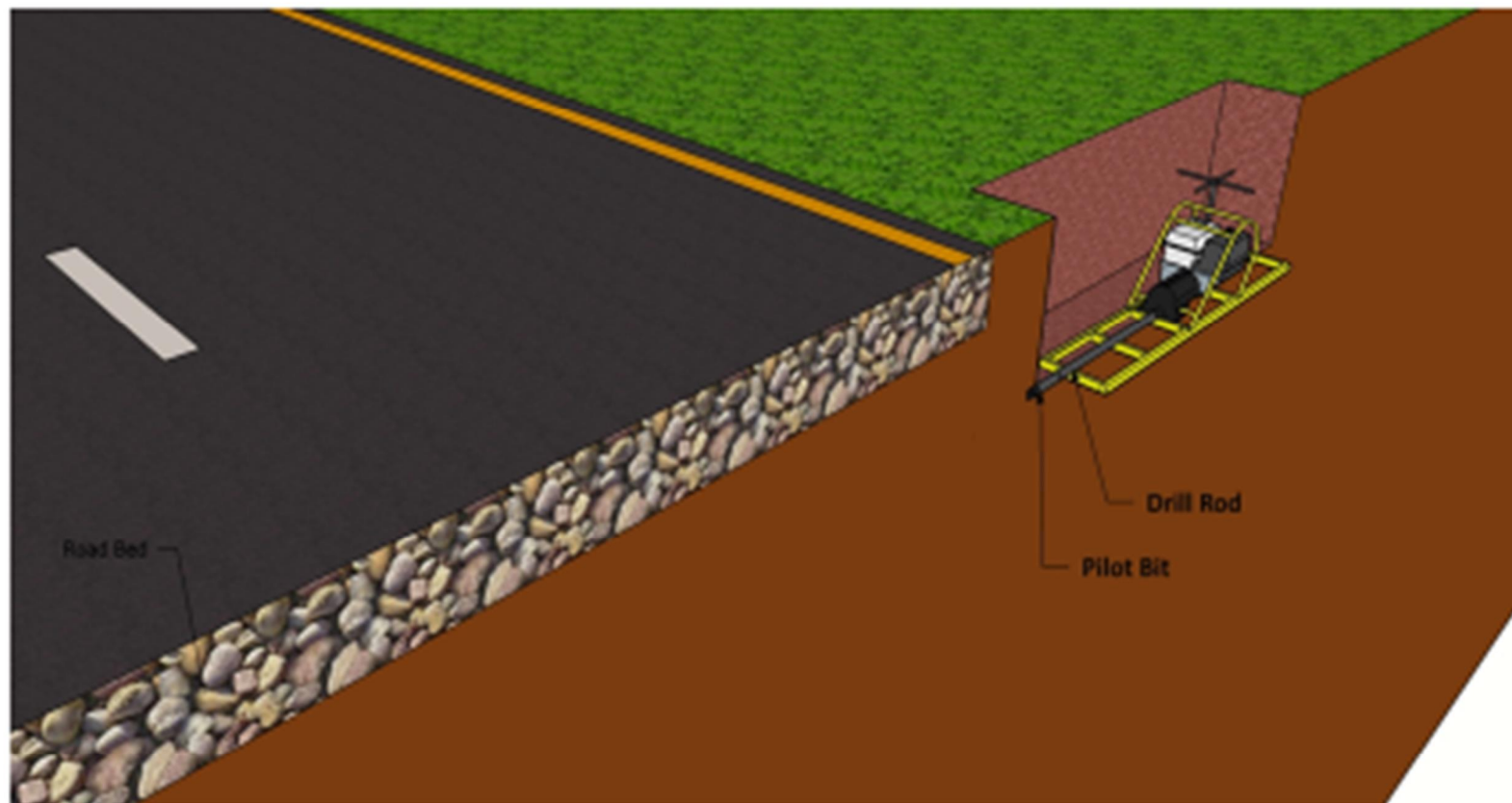


Figure 2

**Step 3:**

As each joint of Drill Rod is pushed into the ground a new one is added behind.

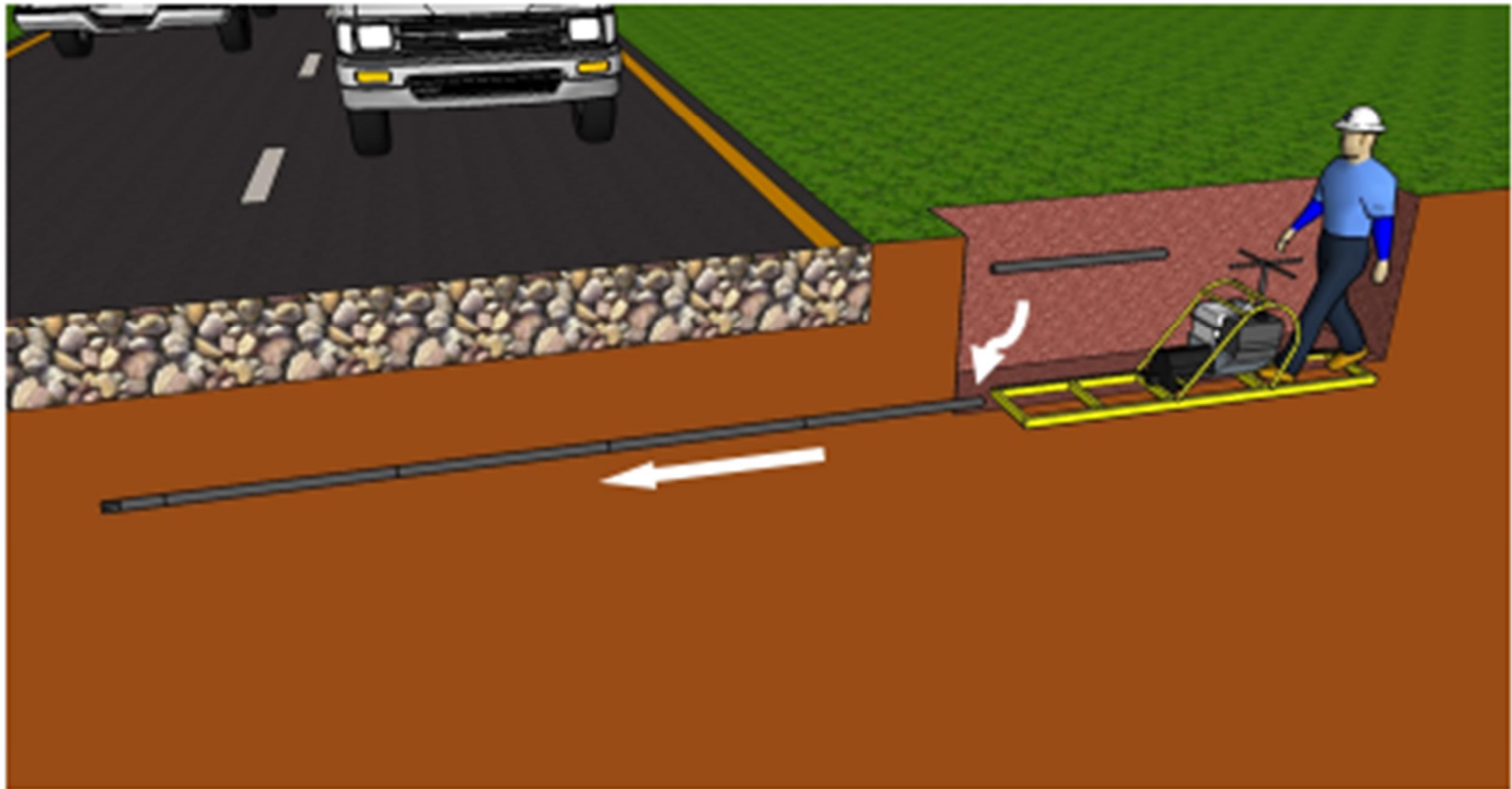


Figure 3

### Step 3: (Contd..)

Continue adding Drill Rods until the Pilot Bit reaches the come-out hole.

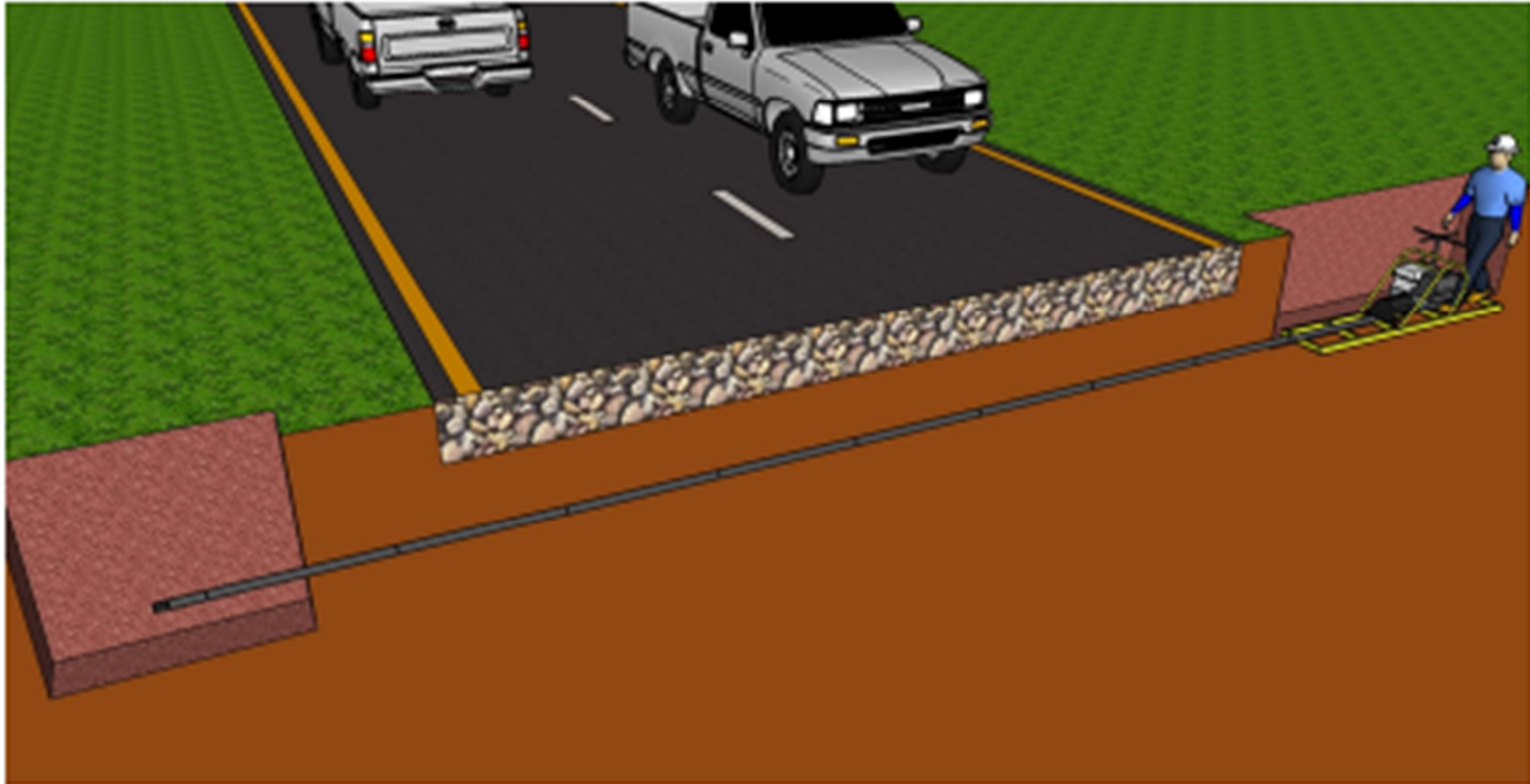


Figure 4



#### Step 4:

Remove the Pilot Bit and screw on the Backreamer

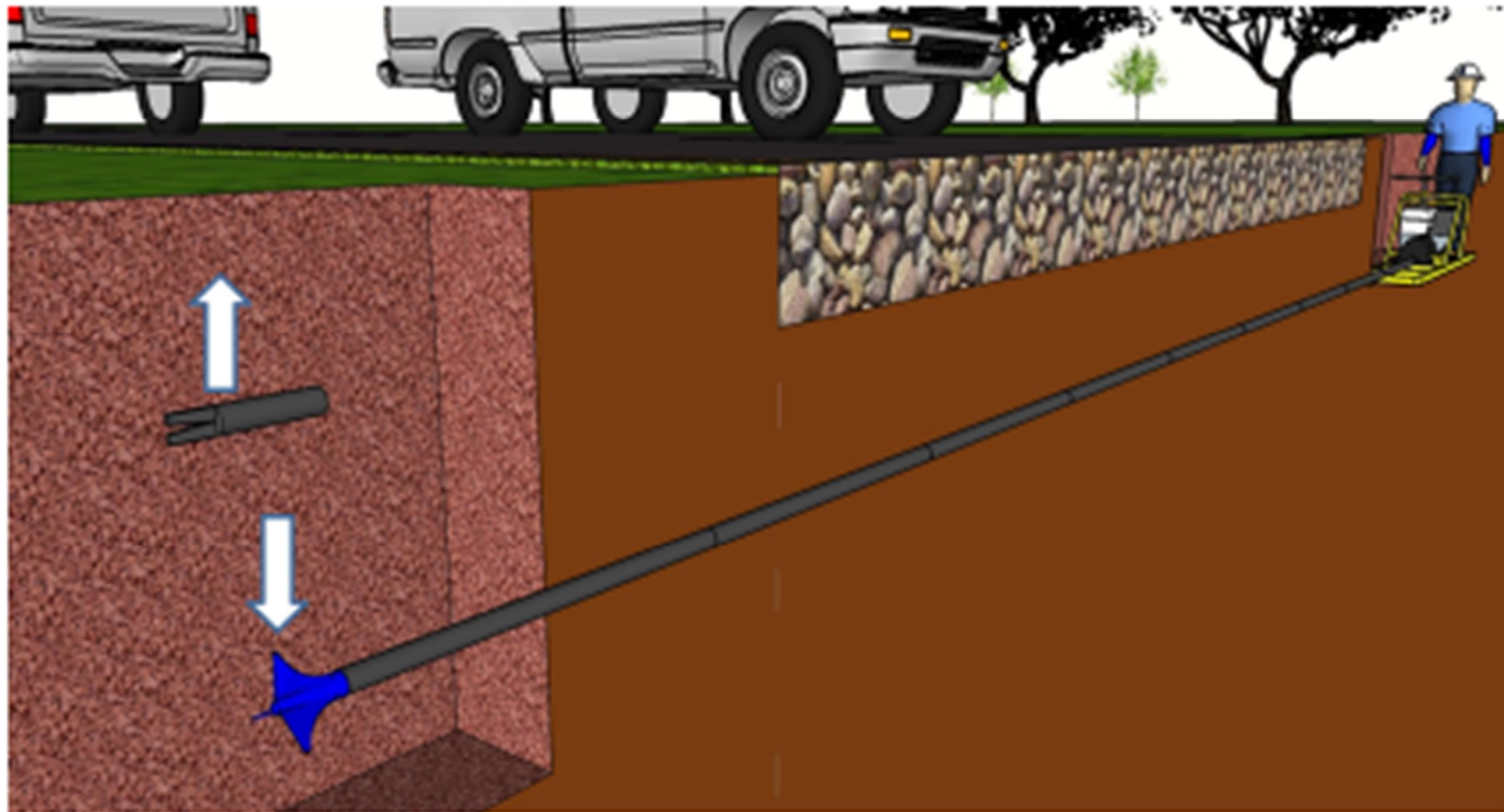


Figure 5

**Step 5:**

Start moving the machine backwards and disconnect the emerging Drill Rods as they becomes completely exposed (at machine end)

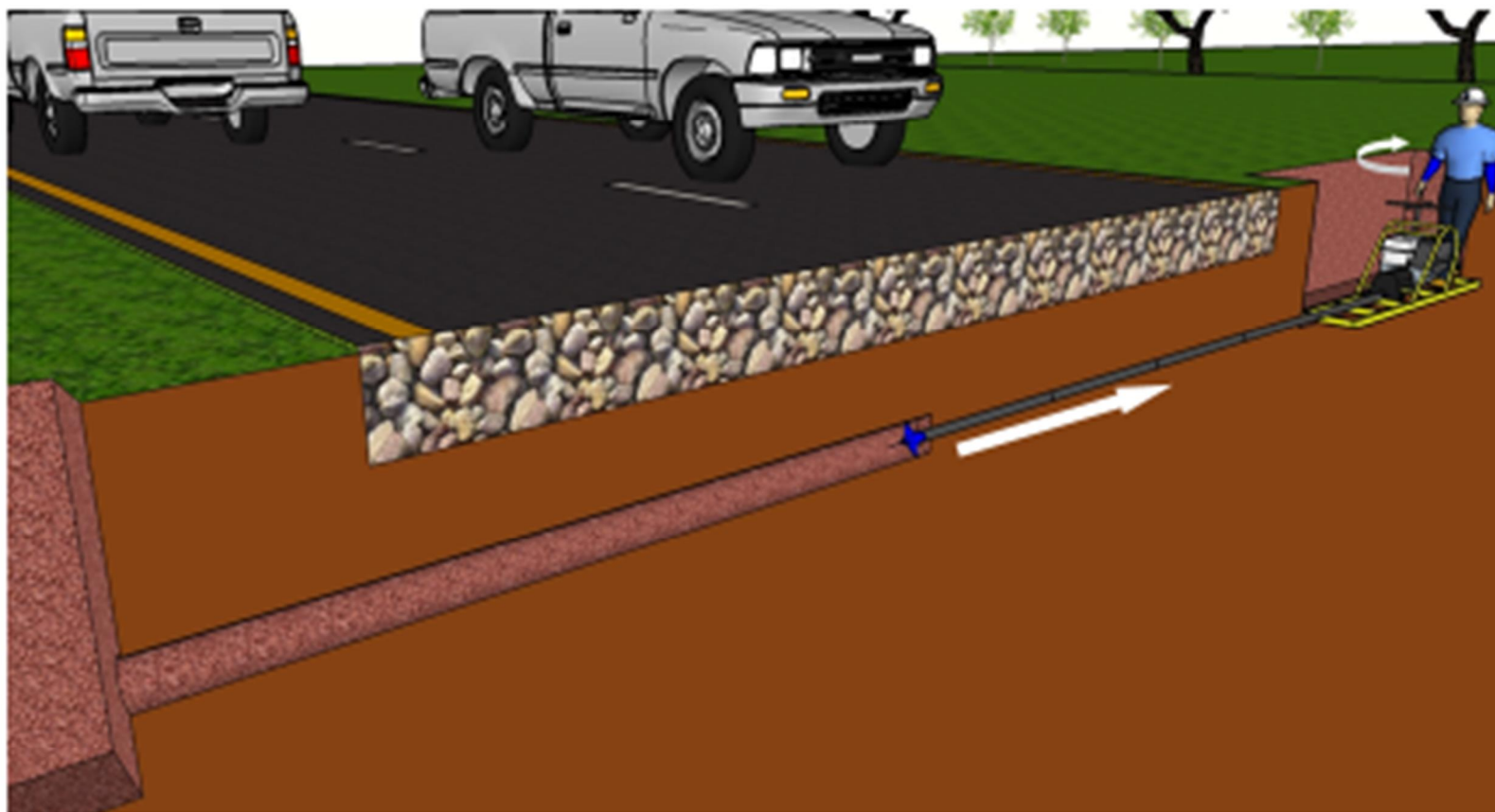


Figure 6

### Step 6:

Once the **Backreamer** reaches the start point cleanup the hole with a Pull-plate (if required).

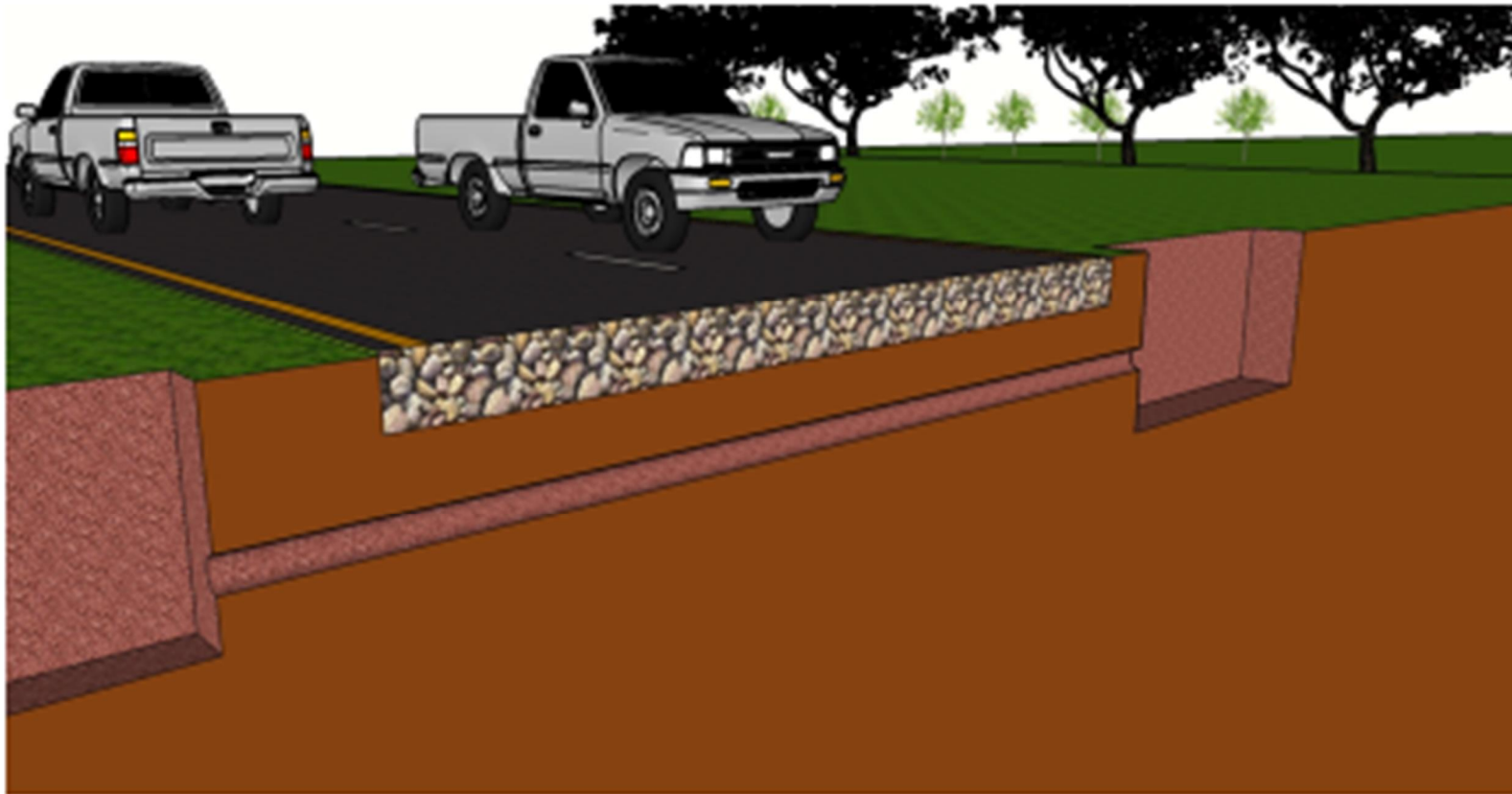
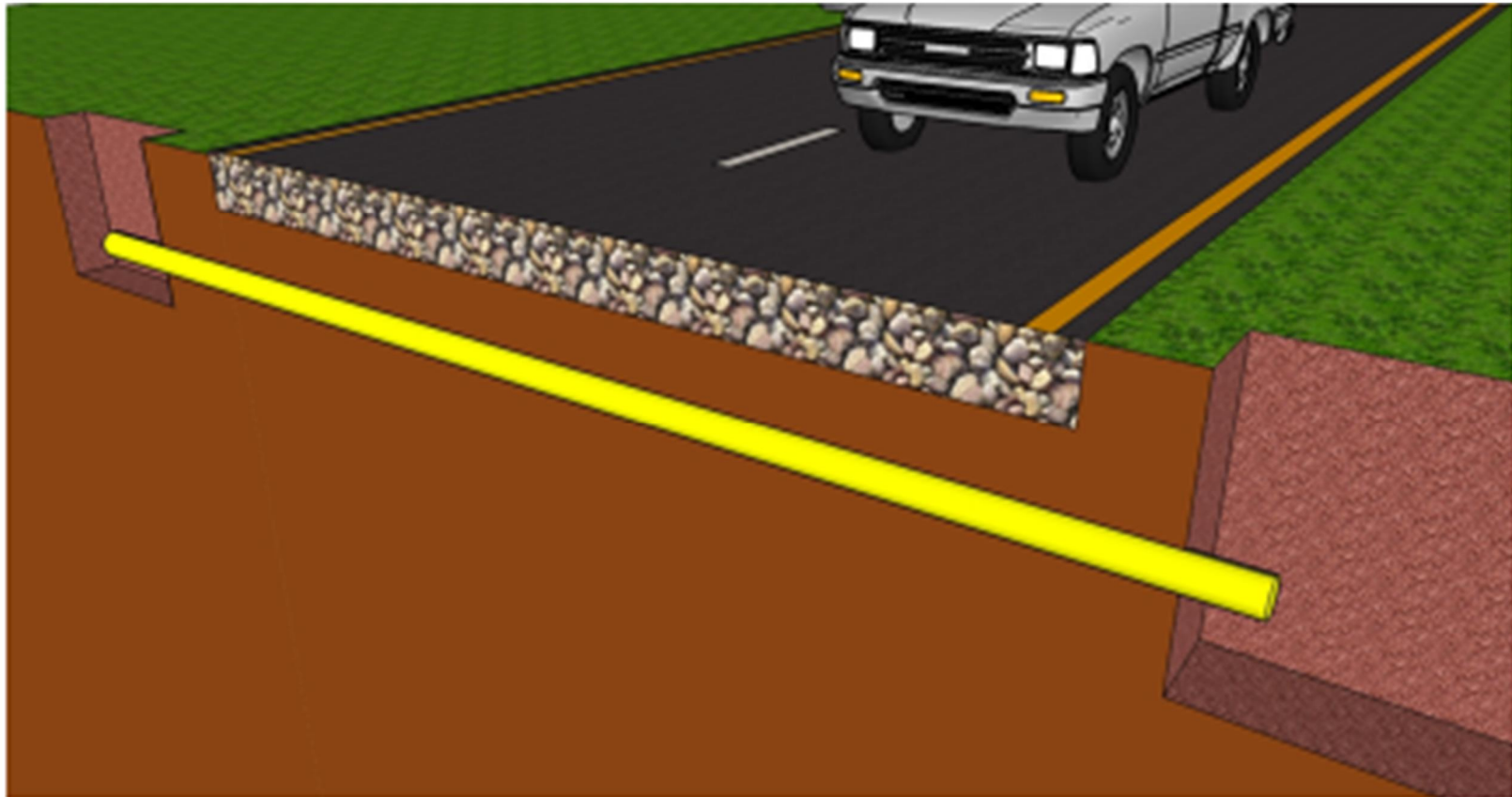


Figure 7

### Step 7:

Slide in the pipe while the hole is still lubricated with slurry

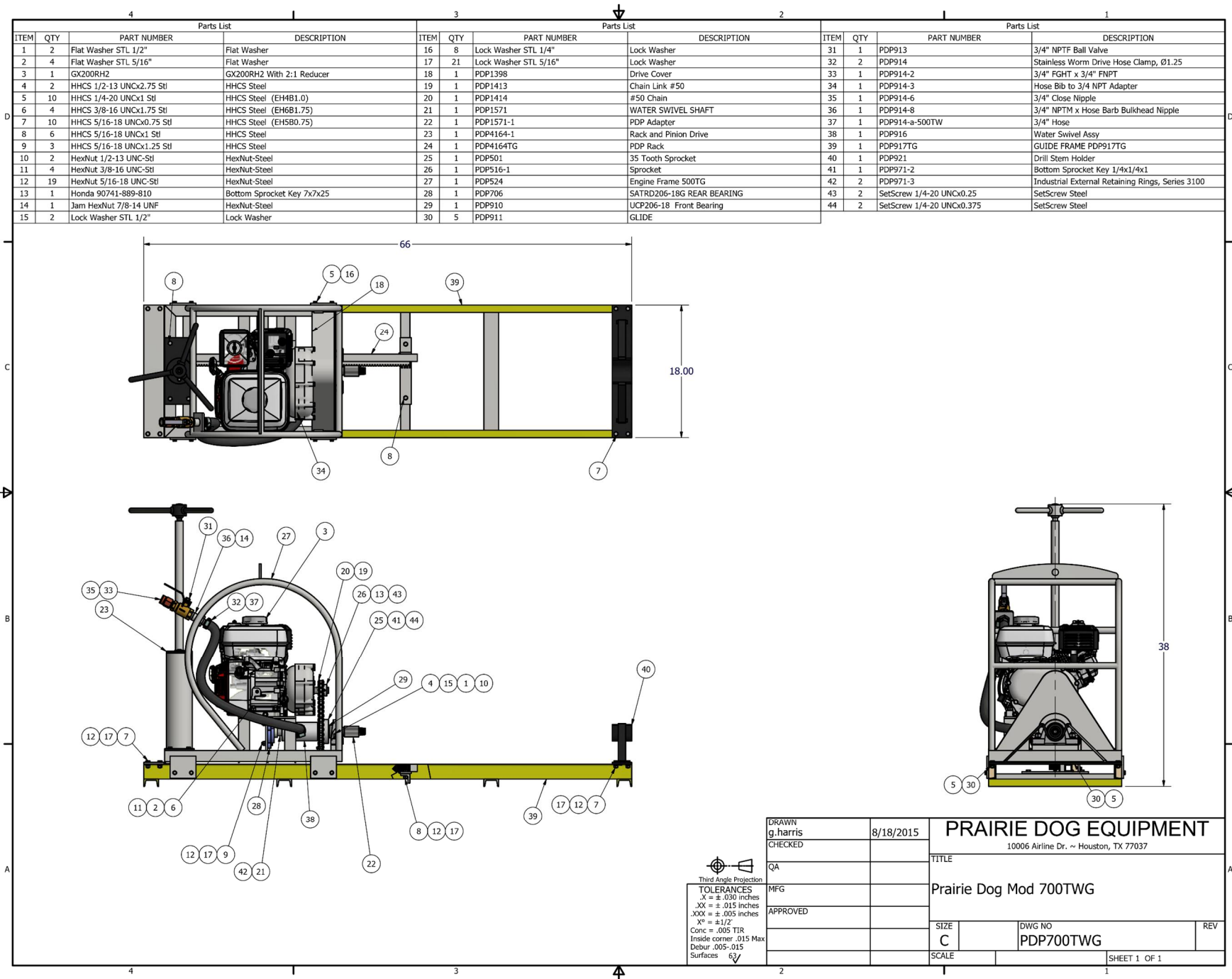


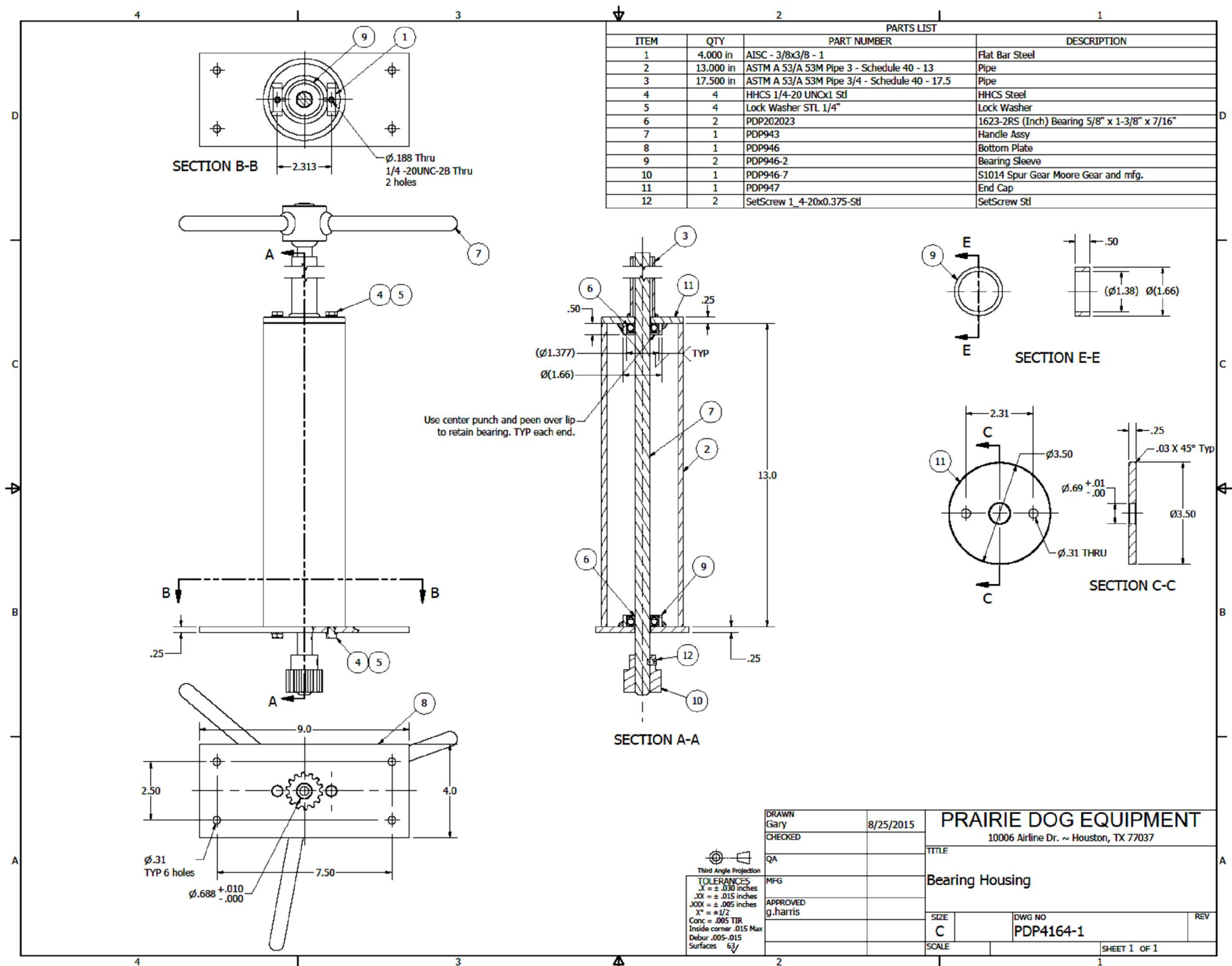
Note: The above steps are for illustration purpose only. Please read the user manual and safety instructions [supplied with the machine] before operating.

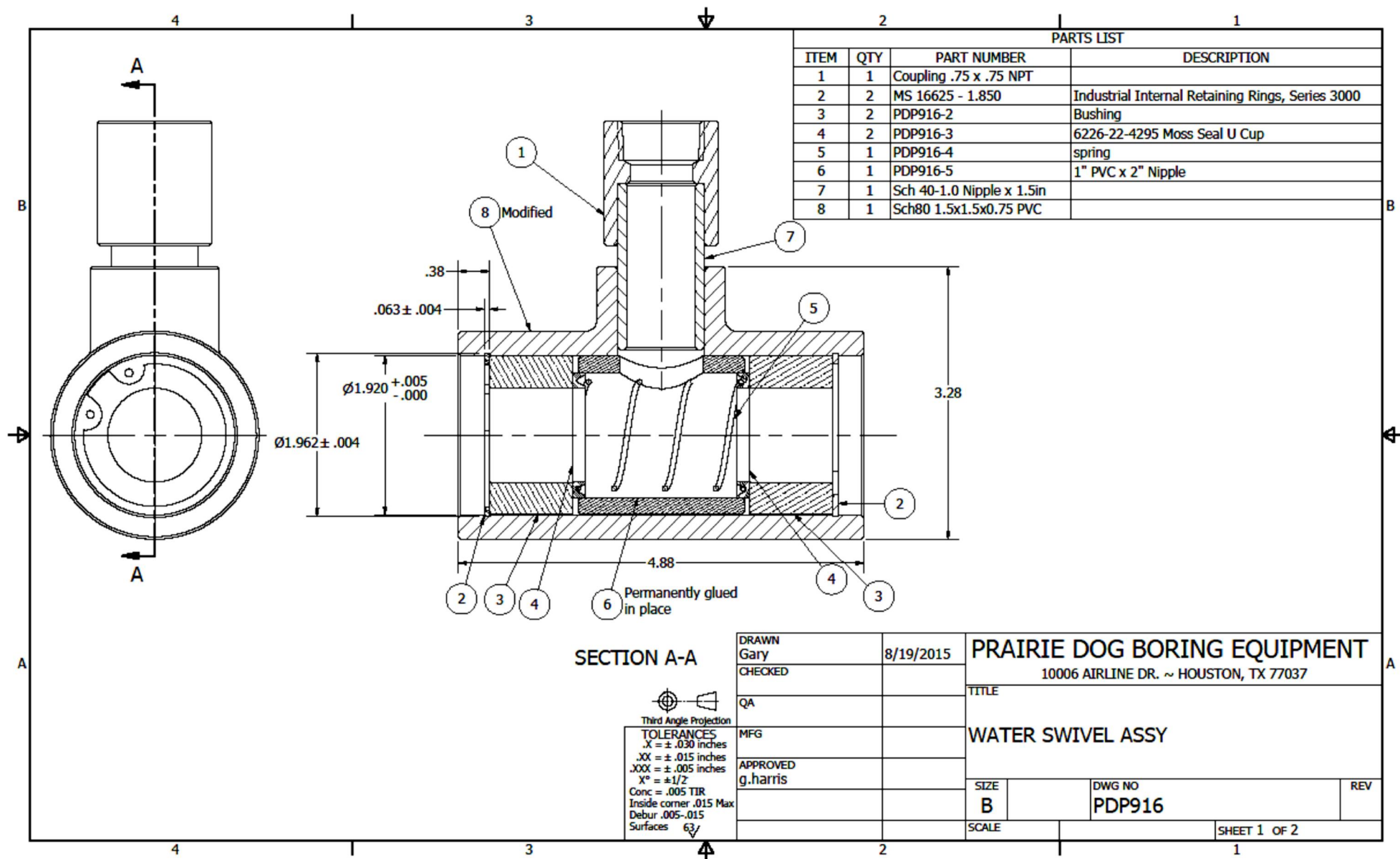


Figure 8









NOTES:

